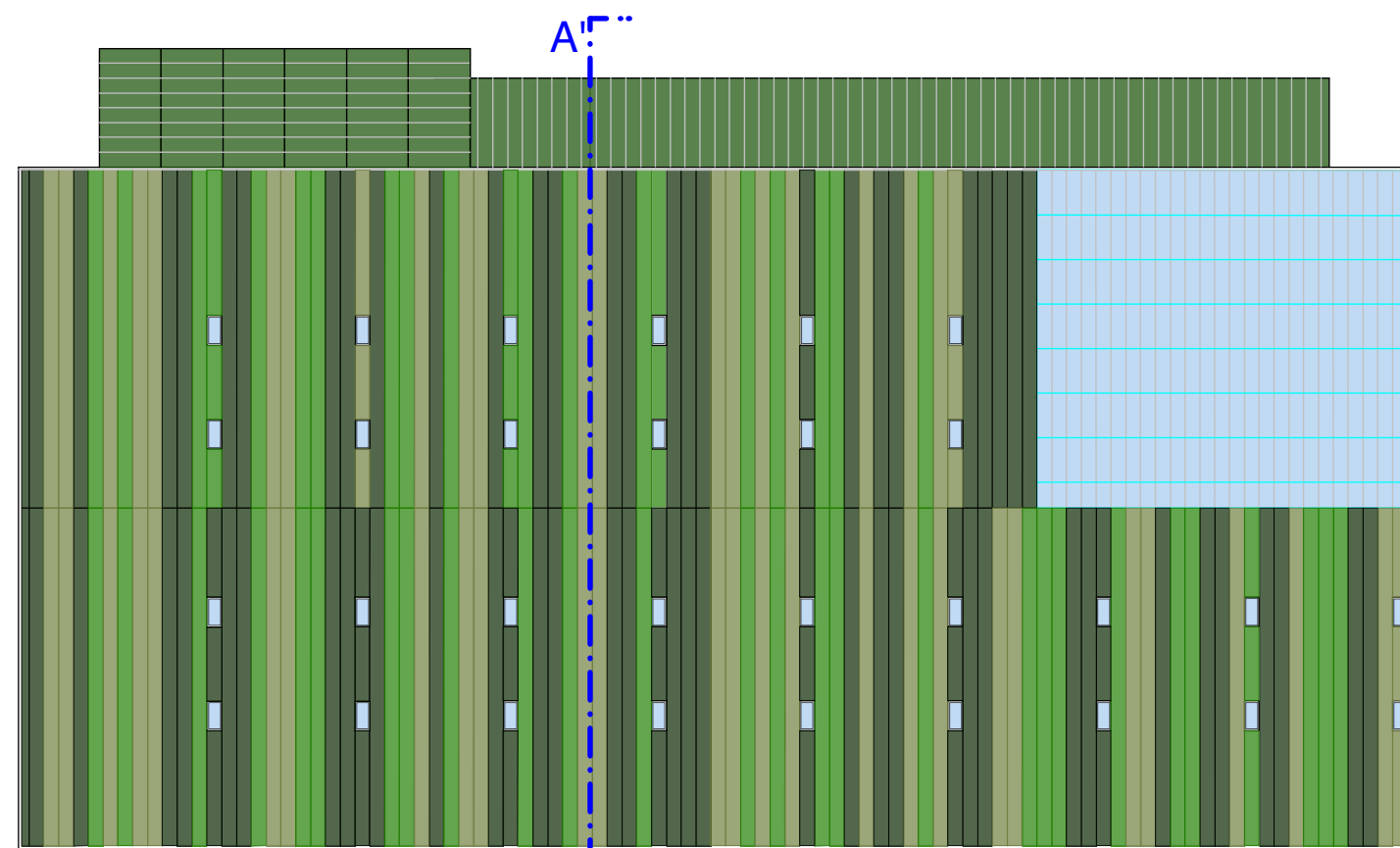
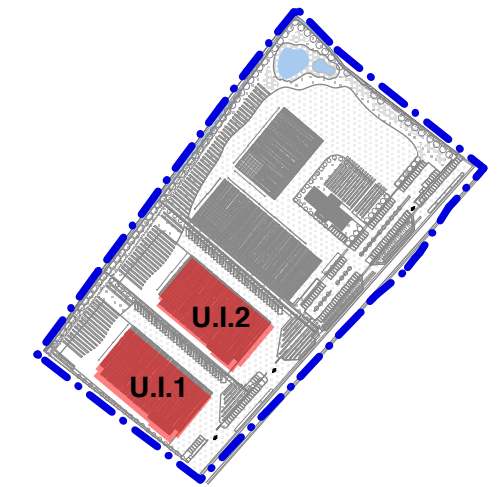
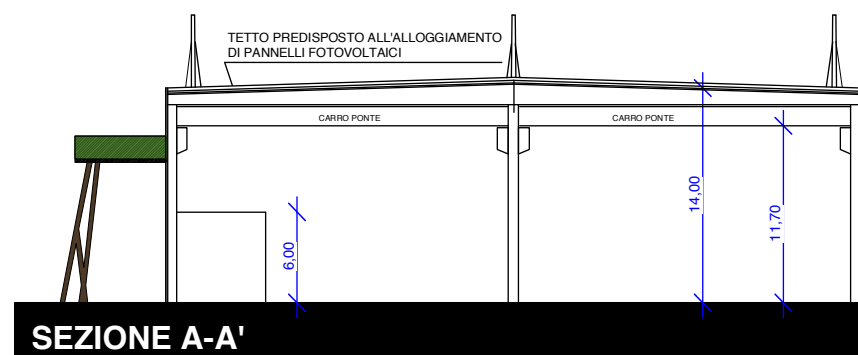
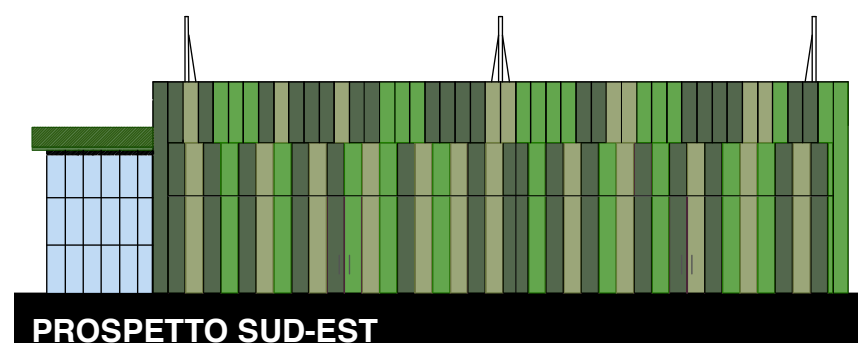
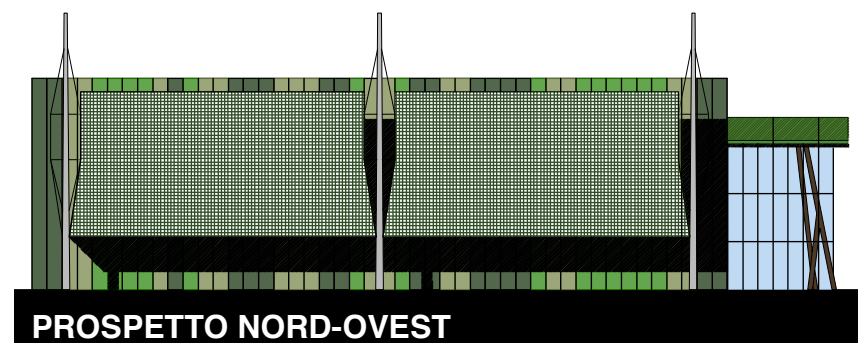
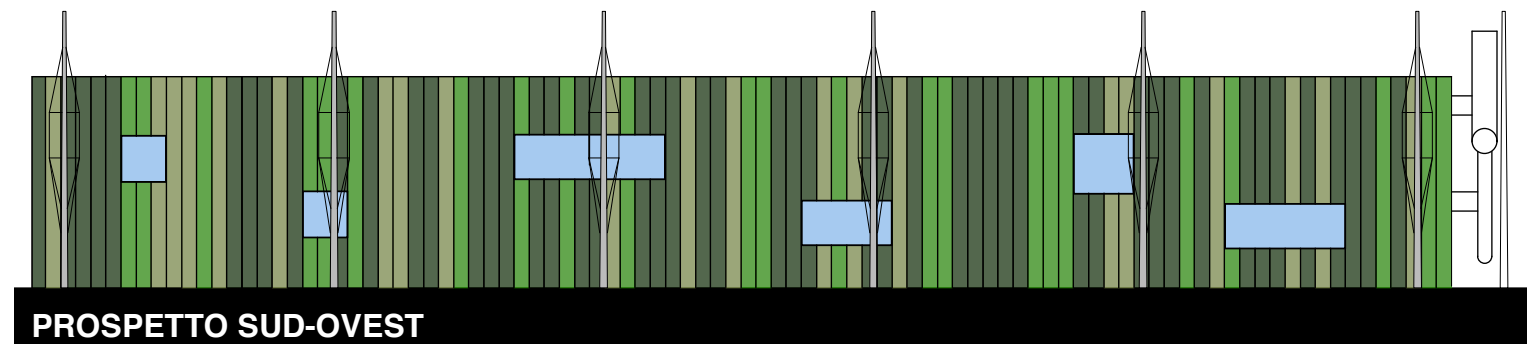
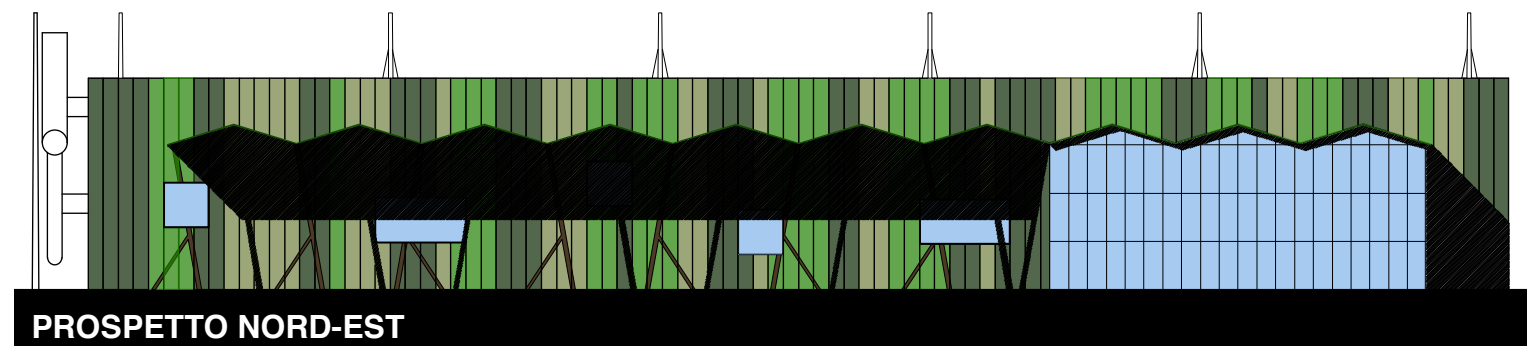


PIANTA DEL PIANO TERRA



PIANTA DELLA COPERTURA



LR 38/98 SCREENING

REGIONE LIGURIA - COMUNE DI SARZANA
**PROGETTO PER UN INSEDIAMENTO
 PRODUTTIVO ARTIGIANALE**

COMUNE DI SARZANA - LOCALITA' TAVOLARA

COMMITENZA *Valorizzazione e Patrimonio s.r.l.
 Sig.re Corsi Giocondo
 Sig.re Ceola Sergio*

REDAZIONE *STUDIO A.P.U.A. - Arch Dorianò LUCCHESINI
 Ing. Patrizio SCARPELLINI*

B QUADRO DI RIFERIMENTO
 PROGETTUALE

B2 - INQUADRAMENTO EDILIZIO

EDIFICI U.I.1 e U.I.2
 Piante, prospetti e sezioni **B2 4**
 scala 1:500